

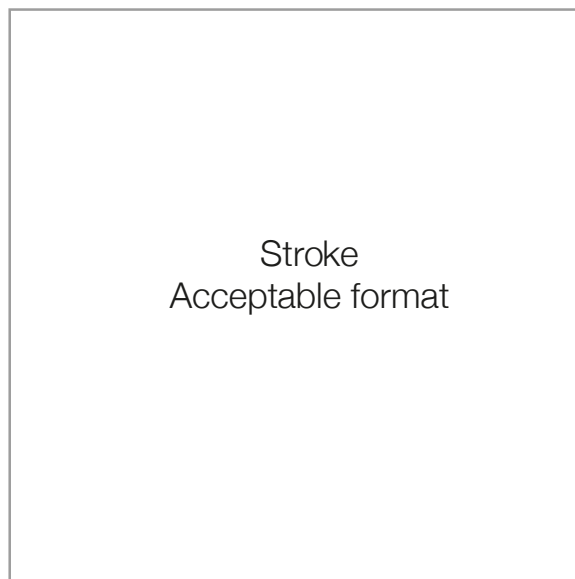
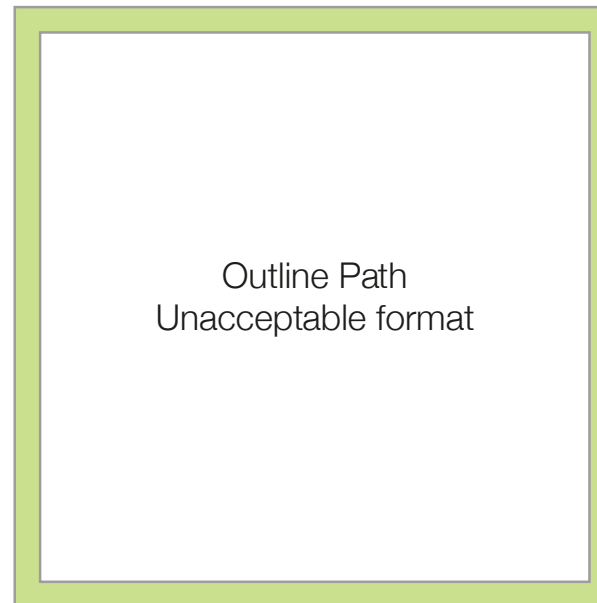
Kaufland Dieline Requirements and Best Practices



The Best Practises...






The following information should be indicated:

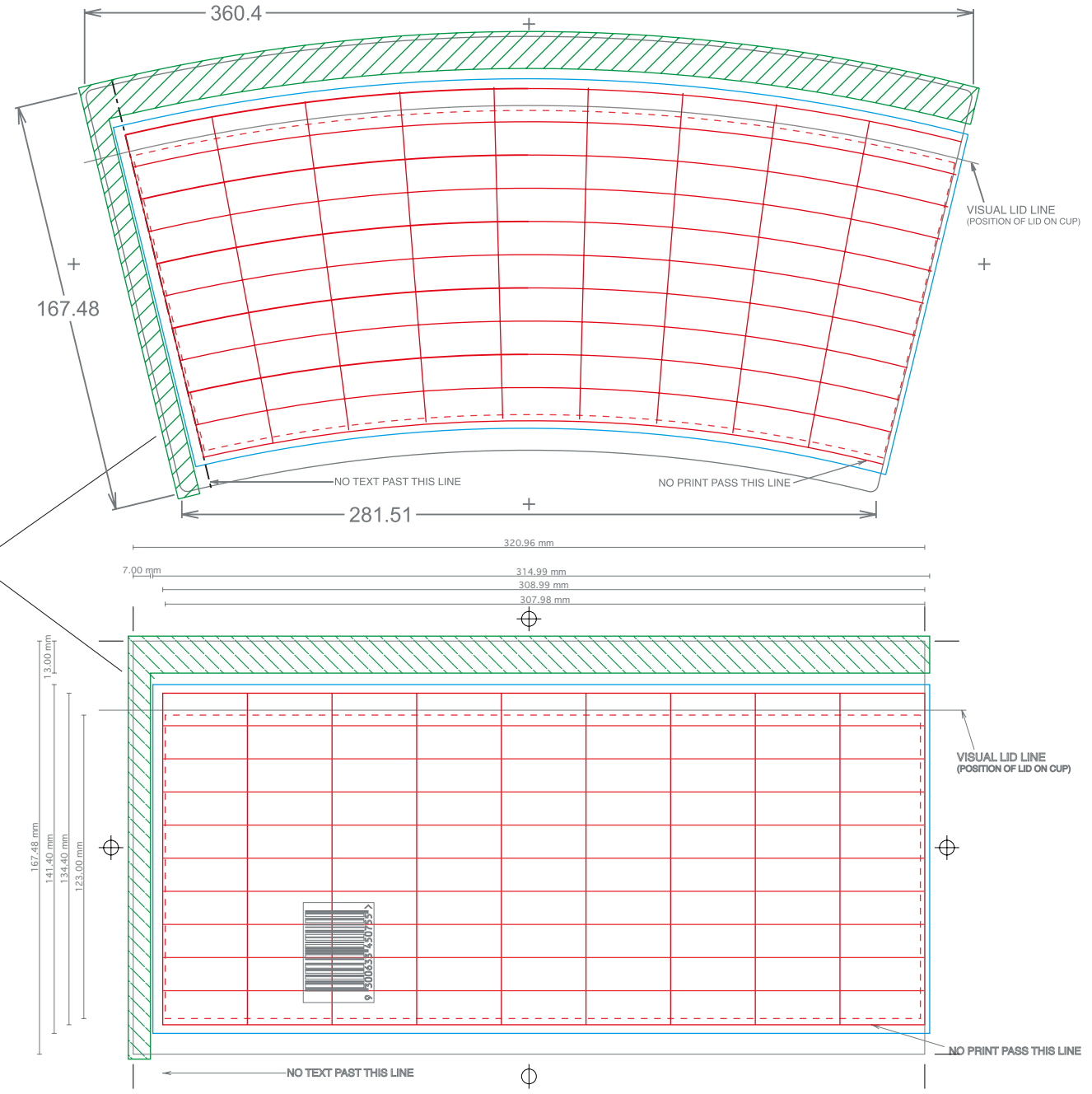
- Dielines to be supplied at 100% size.
- Any print elements such as Eyemarks, codes, register marks, gates, logos that are required on the packaging must be coloured as printed on a separate layer called “print elements”.
- FULL DIMENSIONS including all internal sections, and overall at dimensions.
- Clear indication of orientation and the front / top / bottom / back / sides of the dieline marked for all pack types.
- Fold / Crease lines & Bleed.
- Available text and graphic areas.
- Obscured and overlap areas.
- Varnish free, Print free and Glue areas.
- Barcode area only needs to be indicated if its position is fixed. Any packaging that uses barcode MUST include print direction on dieline.
- Dieline reference name or number.
- Durability coding area (BBE) size and position.
*Please advise if this is not required on the artwork, otherwise dieline will be rejected for missing information.
- Dielines should always be supplied as a stroke path, not an outlined path, (these will be rejected). (See Page 2 for visual explanation).
- ALL dielines should be supplied in Adobe Illustrator vector line format (.ai) as well as pdf.
Supplying a dieline in a pdf format alone should be a last resort as it could delay artwork production.
- All factory trials to be completed and signed off before submitting the dieline to Artwork agency.
- Advise whether multiple variants or Front of Pack and Back of Pack labels will be printed together.
- Only use alphanumeric and underscore in the names eg Dieline_01.ai.
- There are multiple packaging formats; following pages show most of the commonly used packaging formats but not all are covered. If you have any special requirements unique to your manufacturing and or printing process, please ensure any special requirements for your pack format and clearly detailed on the supplied dieline.



Wrap Dieline

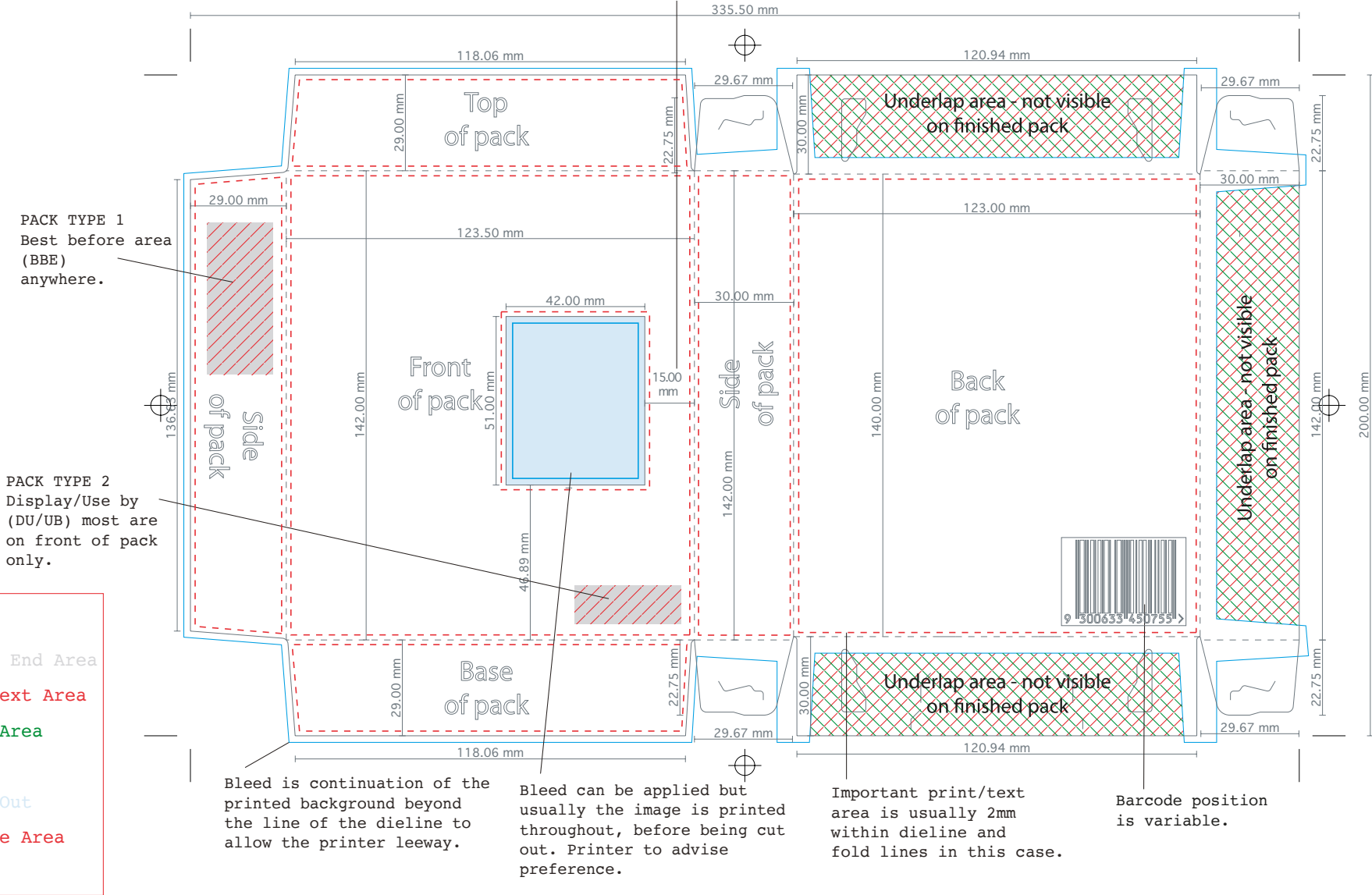
Both warp and straight cutter to be supplied. Artwork is built on straight cutter and warped once approved ready to go to print.

	Dieline
	Visible Image Area
	Important Text Area
	Print Free Area
	Bleed Line

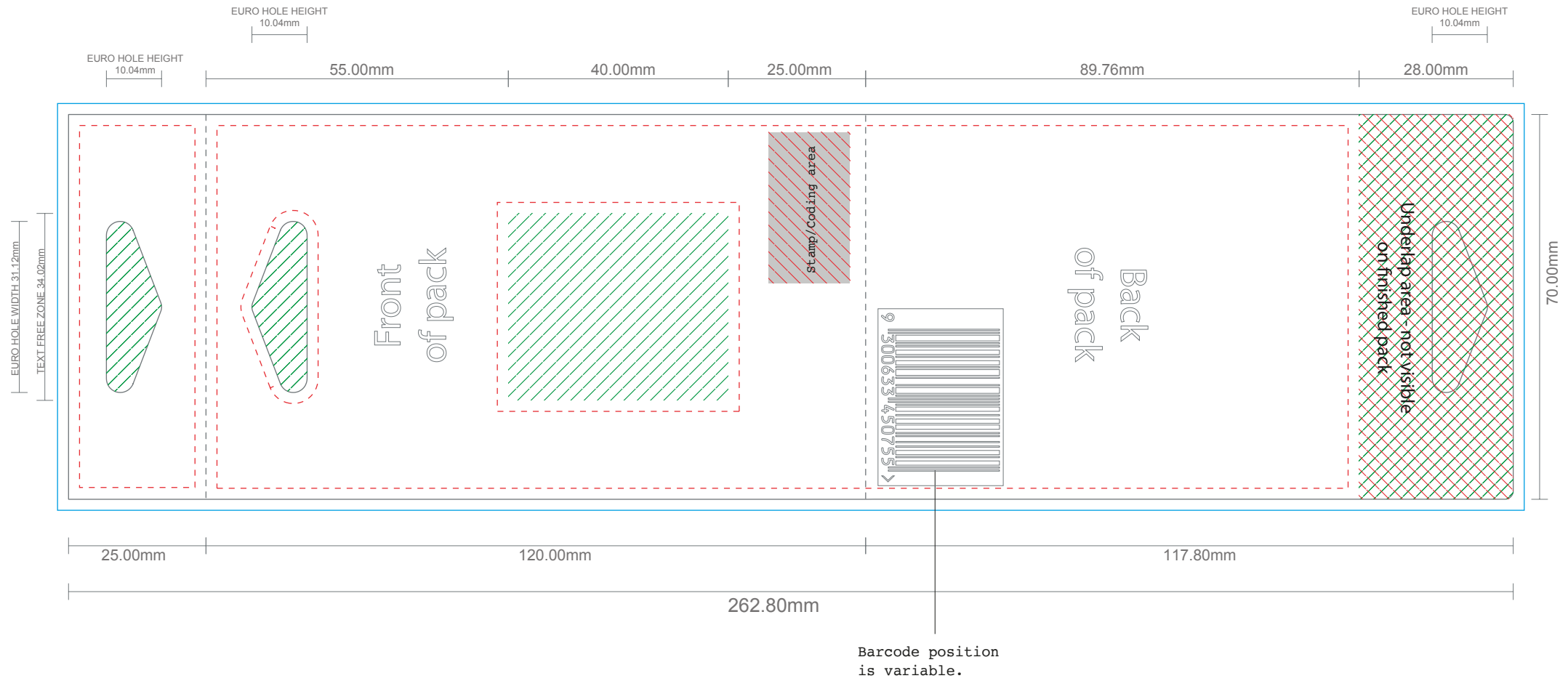









Carton with Window Cut

The window is cut out from the carton. It must be 15-30mm away from the fold/dieline depending on pack size, to ensure strength of the carton.



Header Card with Euro Hole

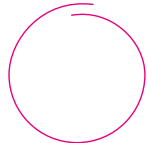
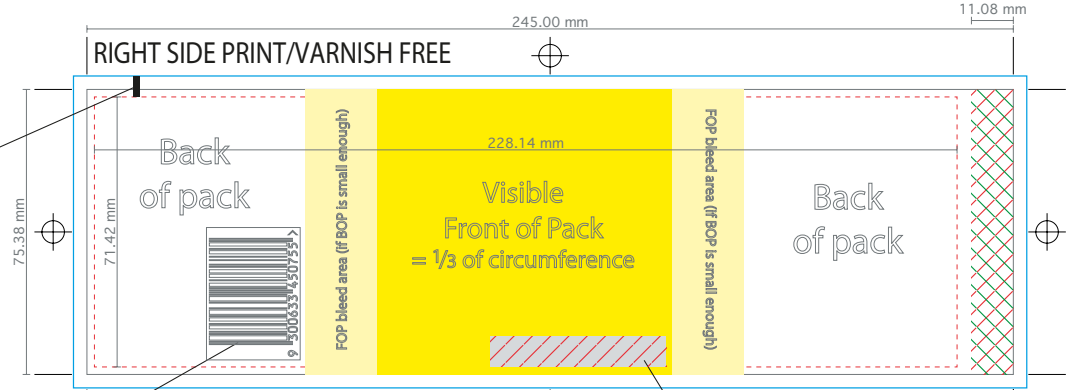


	Dieline		Fold Lines
	Best Before End Area		Varnish Free Area
	Important Text Area		Bleed Line
	Text Free Area		

Label_RHS

Correlation marks, (Press marks), are only used on wet glue labels for label identification. A batch can be identified by the position of the mark when labels are stacked and viewed from the side.

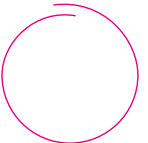
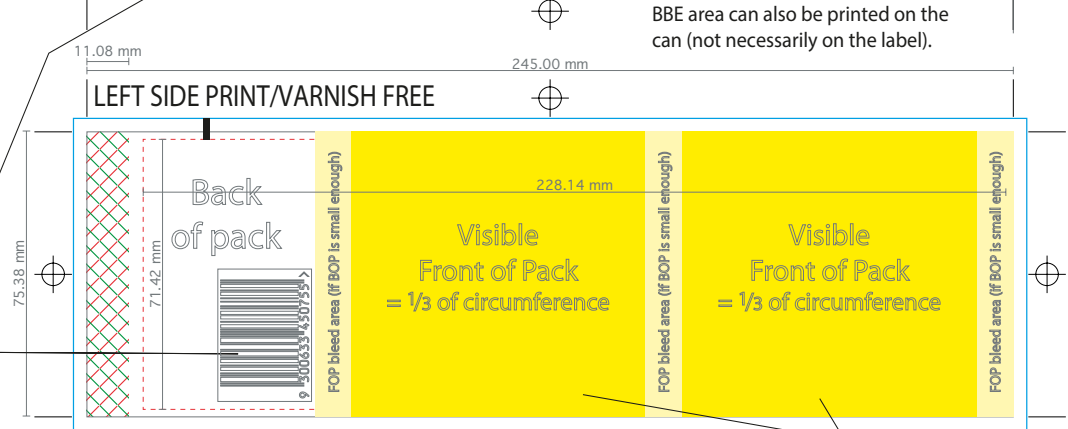
If correlation marks, (press marks), are required, colour and position should be given in written form to avoid multiple dielines. ie. 2 mm from left had edge and move to the right by 2mm for every variety.



Cross-section shows left side overlap

Label_LHS

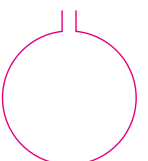
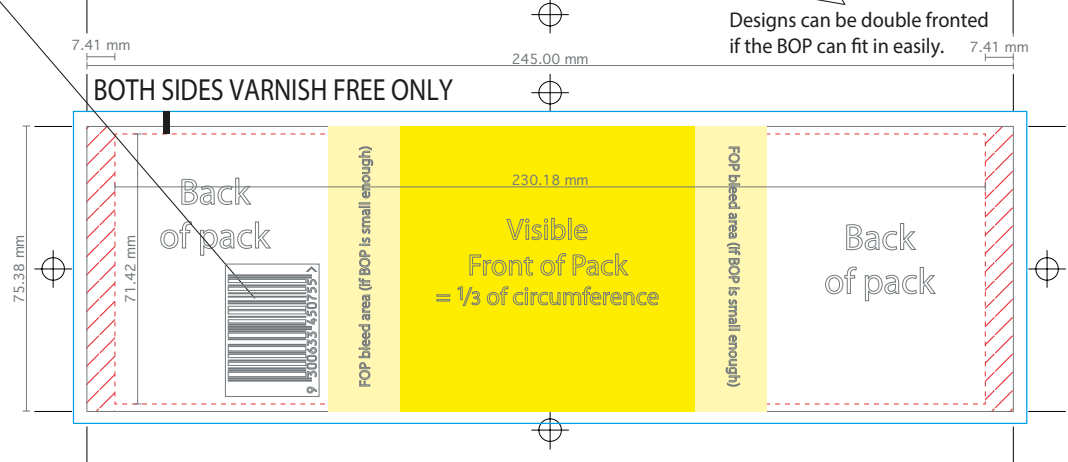
Barcode position is variable.



Cross-section shows right side overlap

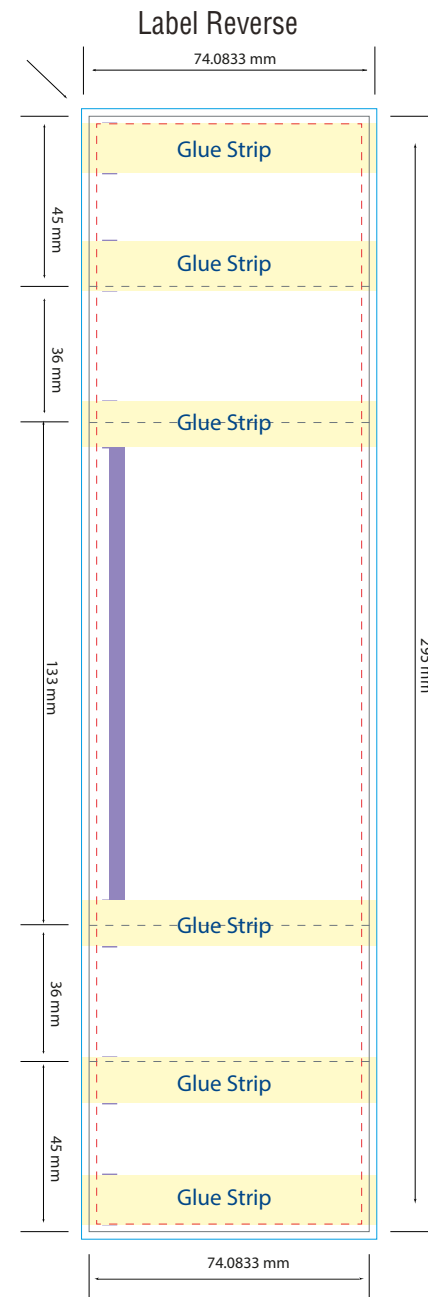
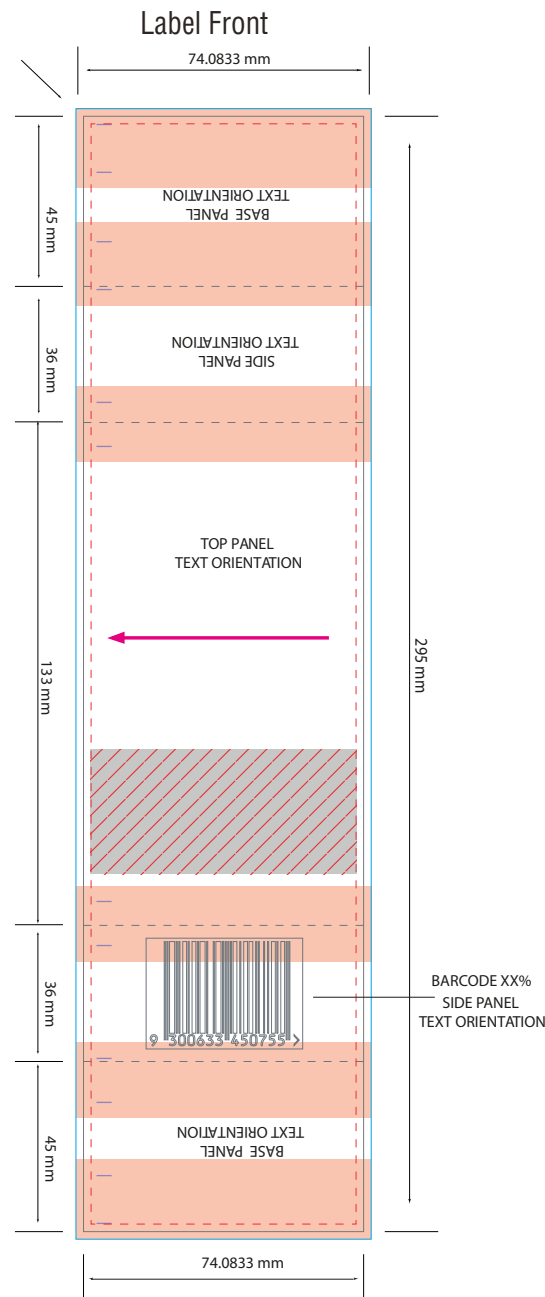
Label_BOTH

- Dieline
- Best Before End Area
- - - Important Text Area
- /// Print Free Area
- /// Varnish Free Area
- Bleed Line



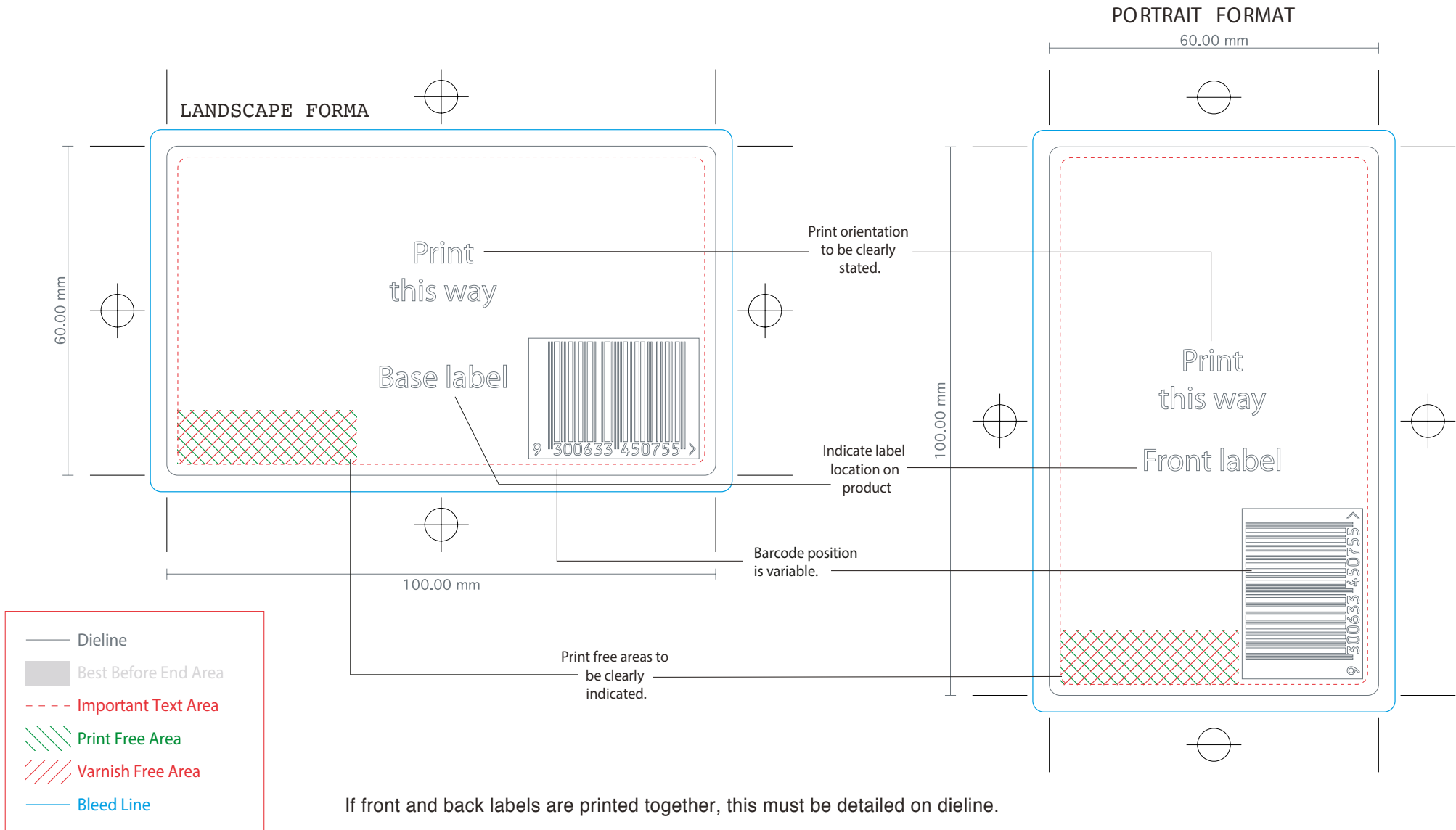
Cross-section shows both sides

- Dieline
- Best Before End Area
- Important Text Area
- Print Free Area
- Fold Lines
- Eyemark on Reverse
- Silicone (NOT Print Free)
- Varnish Free Area
- Bleed Line



Landscape

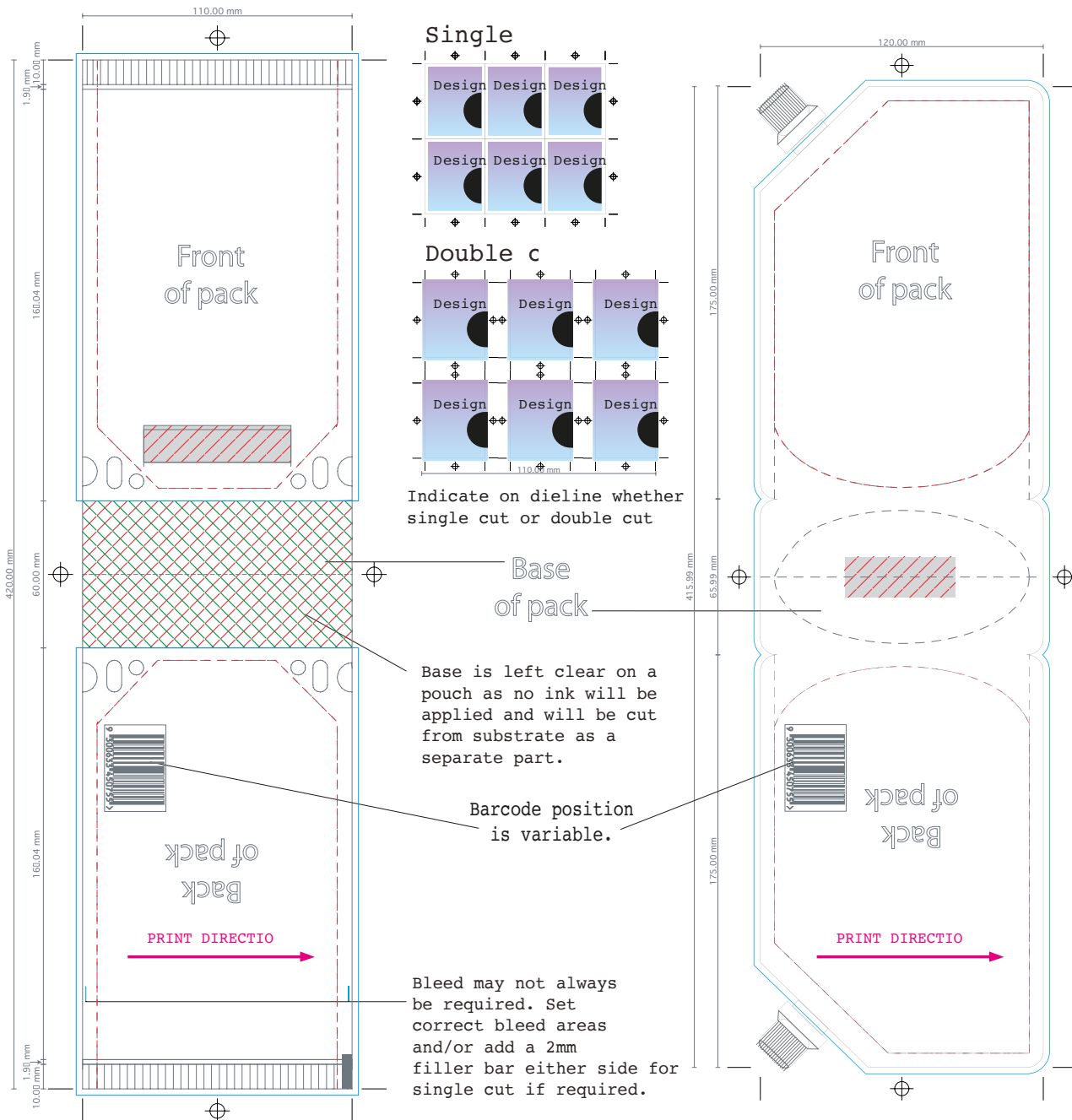
Portrait



DOY

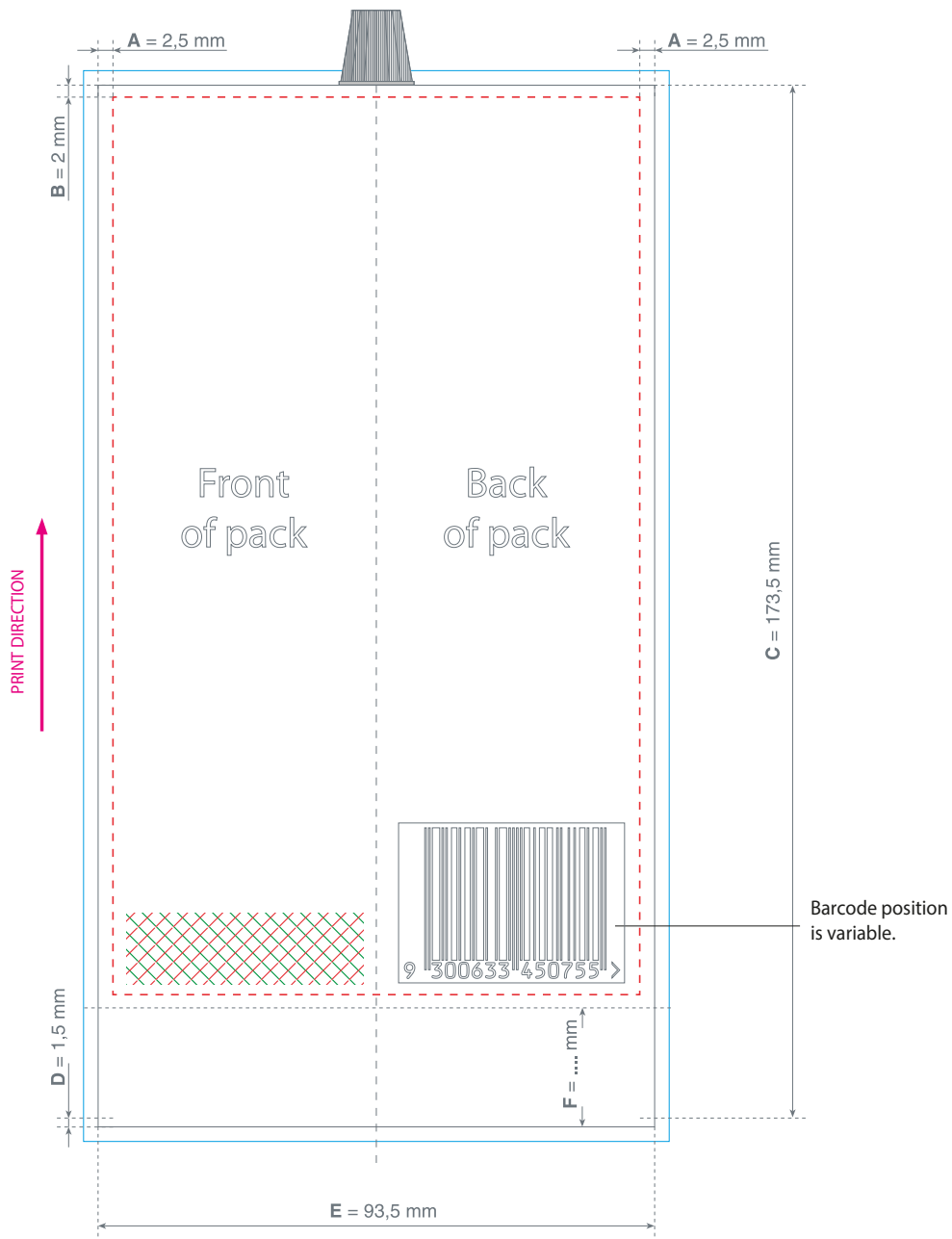
- The word 'doy' refers to the machine that makes this type of pouch.
- Printed from one part
- BBE area can be printed at the base
- Often has a zipper of shape because the 'doy' machine allows for this flexibility of dieline.
- Can be single or double cut.

- Dieline
- Best Before End Area
- - - Important Text Area
- /// Print Free Area
- - - Fold Lines
- /// Varnish Free Area
- Bleed Line



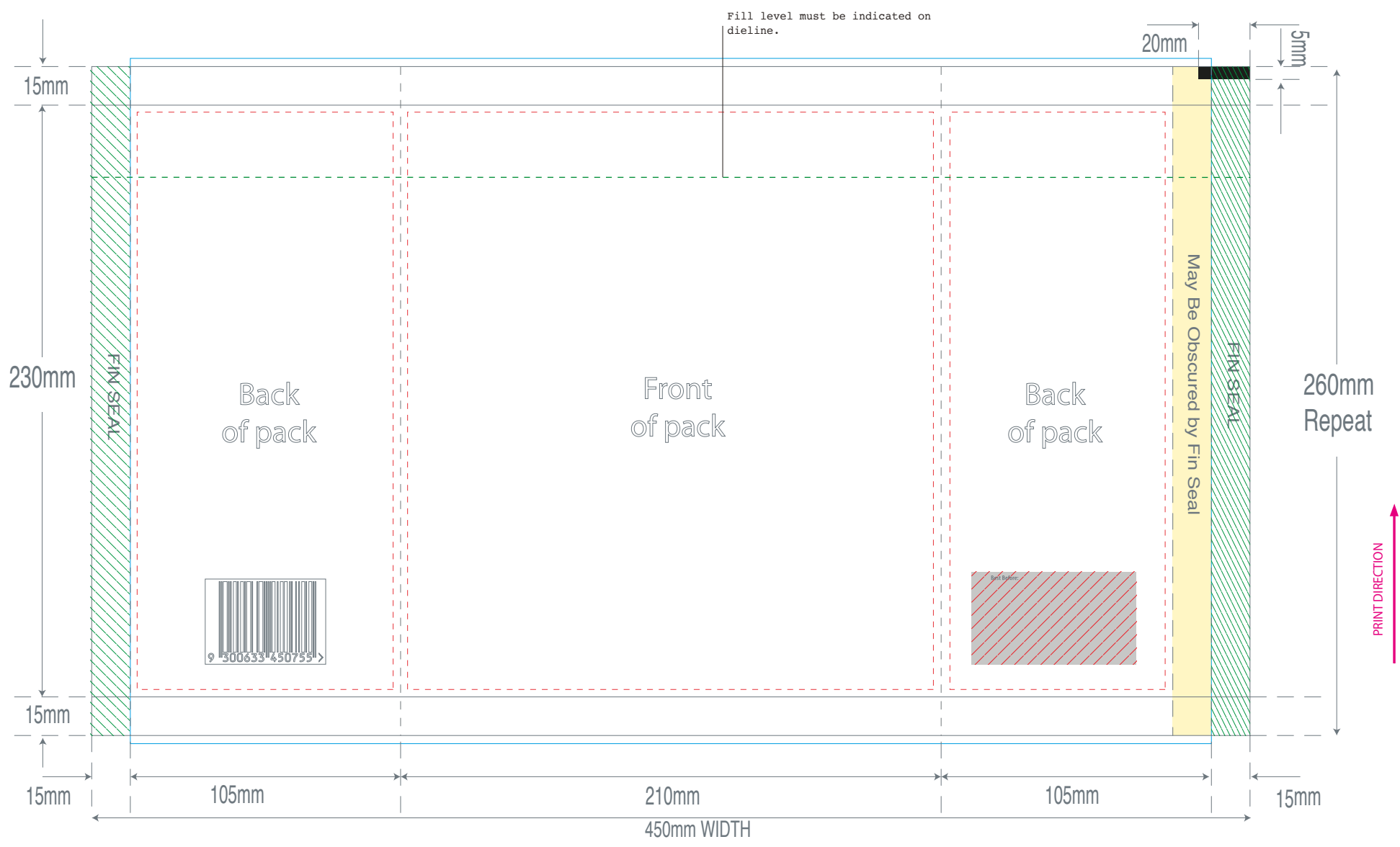
POUCH

- Made up of 3 pieces: The sides, and the base are cut then joined together at end together to make up the pack.
- Can hold liquid, moist semi moist and dry product.
- Substrate can have a paper surface but the inner surface of the packaging needs to be material that can be heat sealed.
- Because it consists of pieces; base, BOP and FOP be printed separately in orientation (BOP can be upright) and the print can set up 'single cut' (see diagram).
- These would always be single cut and therefore the edge must match as there is usually +/- 1 or 2mm tolerance on cutting. Single cut is more economic than double cut, using less material but less accurate.
- Artworks for single cut usually have a 2mm white border either side to allow a margin of error when cut. This prevents part of neighboring FOP showing on the side of artworks.
- BBE can be printed on the base, but is generally not.



- Dieline
- Best Before End Area
- - - Important Text Area
- /// Print Free Area
- - - Fold Lines
- /// Varnish Free Area
- Bleed Line

Barcode position is variable.



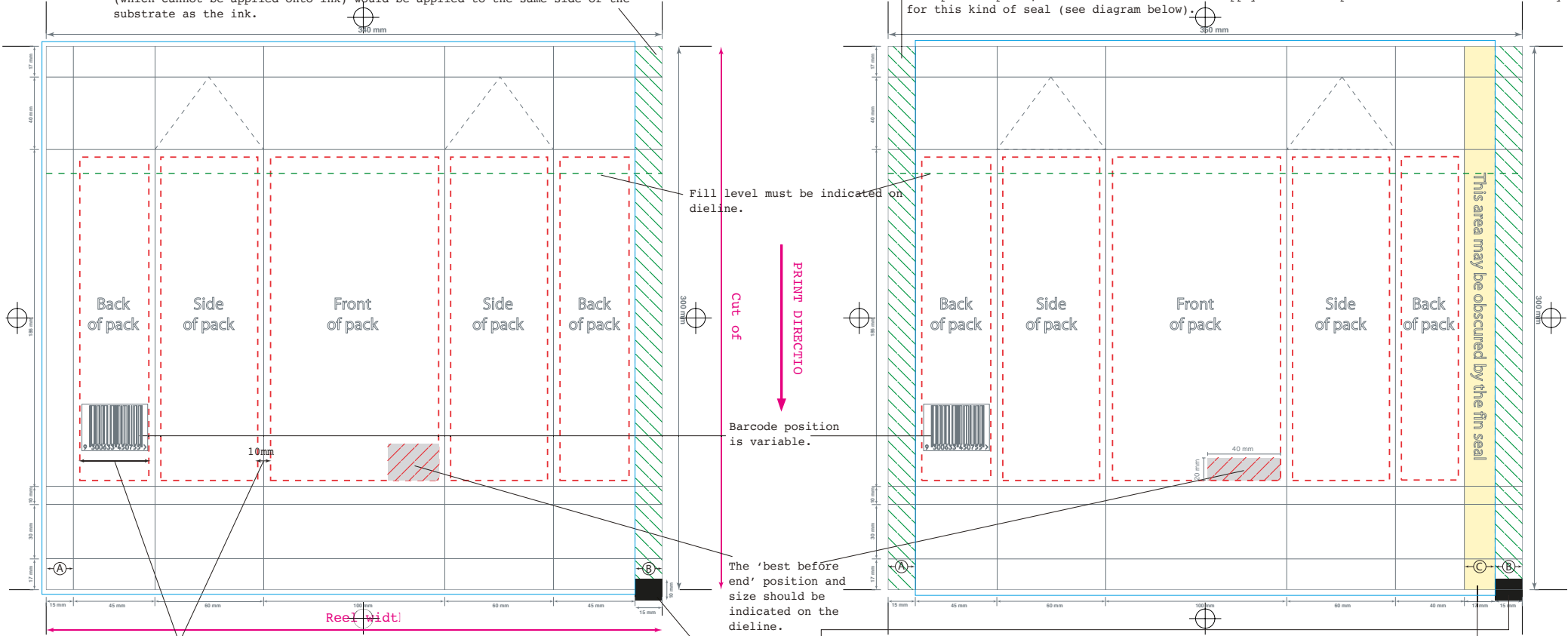
— Dieline	- - - Important Text Area	- - - Fold Lines	— Bleed Line	■ Seal Overlap
■ Best Before End Area	/// Print Free Area	/// Varnish Free Area	- - - Fill Level	

• **LAP SEAL PACK**

On a lap seal this area needs to be marked as 'non-print' because the sealant (which cannot be applied onto ink) would be applied to the same side of the substrate as the ink.

• **FIN SEAL PACK**

On a fin seal, these areas need to be marked with 'non important print' as they can have ink but no important print, because the sealant would apply underneath print face. More material is required for this kind of seal (see diagram below).



This pack has a folding tolerance of 5mm. The 10mm between the 'important text areas' (marked on the dieline by red dashed lines) will curve around so that print in this area cannot be clearly seen face on. Front face of pack should have bleed so that it appears continuous in store from various angles. It is important for text to be within the flat face for legibility - see side of pack panels.

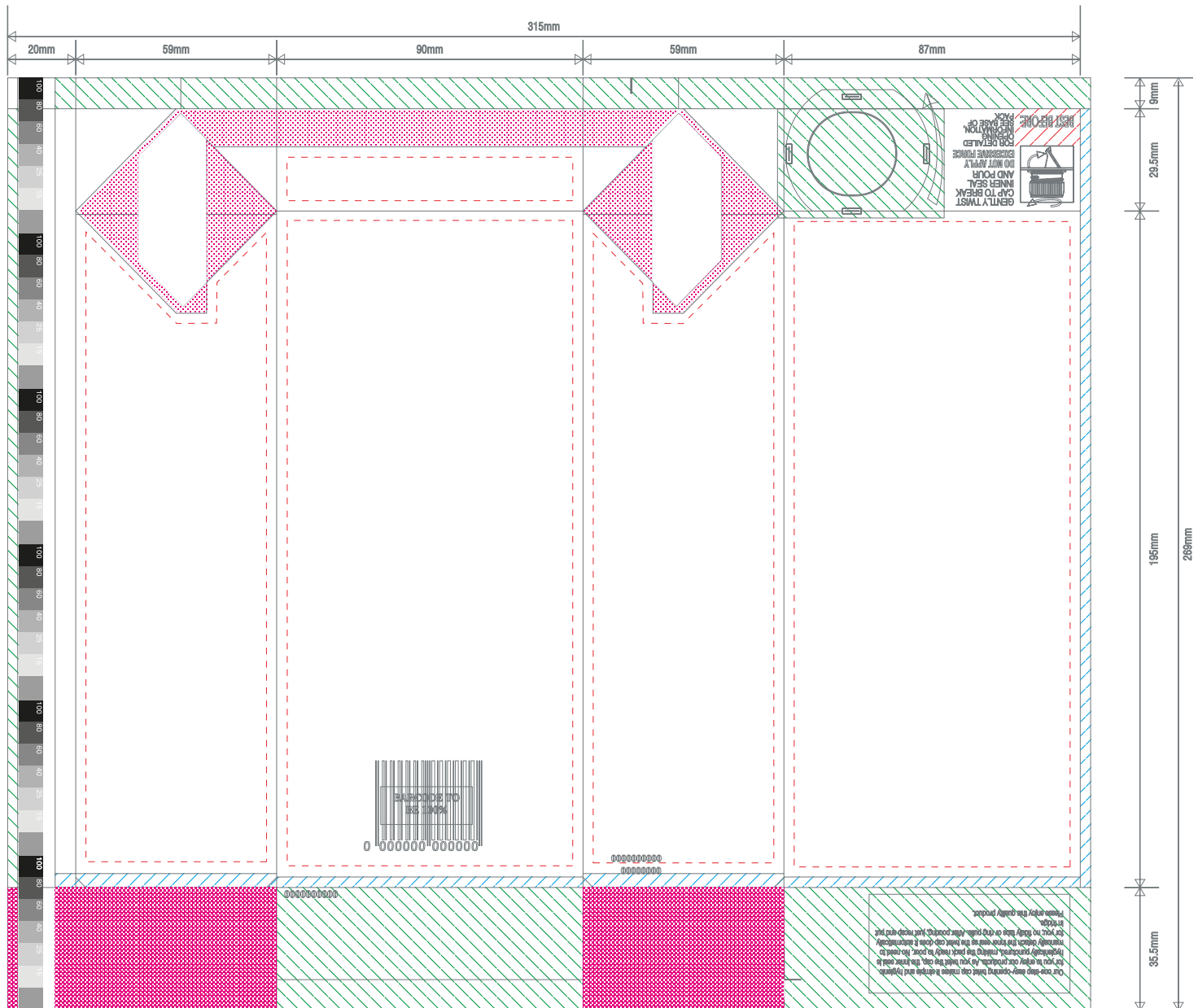
LAP SEAL

Eye-mark to be a contrasting colour to the eye-track. Confirm if eye-track needs to be ink-free.

FIN SEAL

Fin seal overlap must be clearly indicated on the dieline.

— Dieline	NON Print Area (LAP Seal) / NO IMPORTANT Print Area (FIN Seal)	— Bleed Line
■ Best Before End Area	--- Fold Lines	--- Fill Level
--- Important Text Area	/// Varnish Free Area	■ Seal Overlap



1 Litre CB3 Size Swift Top Opening Carton

- Dieline
- Best Before End Area
- Concealed Area
- Important Text Area
- Print Free Area
- Fold Lines
- Varnish Free Area
- Bleed